

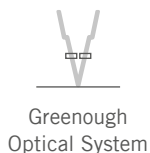


## SMZ171iX

### Wi-Fi Digital Stereo Microscope Solution

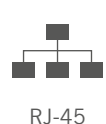
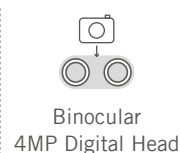
The Motic SMZ171iX is a Digital Wi-Fi stereo microscope station, designed for use with tablets or smartphones via Motic's free app, MotiConnect, and for sharing images with up to six users simultaneously. It is also compatible with computers using our Motic Images Plus software. Ideal for biomedical and material science applications,

the Greenough optical system delivers crisp, clear images with a 6.7:1 zoom range. Five click-stops in the smooth zoom mechanism enable precise magnification reproduction. The large Field of View with 10X/23 eyepieces and a 110mm working distance provides ample space for preparation tasks while maintaining excellent depth of view.



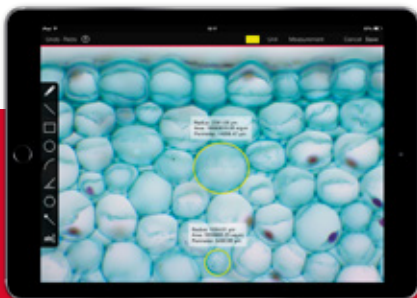
**6.7:1**  
Zoom ratio

**0.75X  
5X**  
Zoom  
magnification



# Technical Specifications

<b>Optical system</b>	Greenough
<b>Observation tube</b>	Binocular Digital head, 45° inclined
<b>Interpupillary distance</b>	52-75mm
<b>Eyepieces</b>	Widfield N-WF10X/23mm with diopter adjustment on both eyepieces, +/- 5 diopter
<b>Objectives system</b>	Zoom, ratio 6.7:1
<b>Objectives</b>	0.75X~5X
<b>Working distance</b>	110mm
<b>Stand type</b>	Pole type stand with transmitted illumination and cold light input
<b>Head holder</b>	For Ø32mm column and Ø76mm head
<b>Focus mechanism</b>	Coarse focusing system with tension adjustment
<b>Focusing stroke</b>	49mm
<b>Incident illumination</b>	LED 3W with intensity control
<b>Transmitted illumination</b>	LED 3W with reflector and intensity control
<b>Illumination features</b>	Transmitted light with tilting reflector for oblique illumination
<b>Accessories included</b>	Dust cover, black/white and frosted stage plates
<b>Dimensions LxWxH</b>	303x239x405mm
<b>Base</b>	303x239mm
<b>Column/Arm</b>	Height 232mm, Ø32mm
<b>Net weight</b>	6.15kg
<b>Camera</b>	
<b>Sensor</b>	CMOS, 1/3"
<b>Capture resolution</b>	4MP (2560x1440 pixels)
<b>Live display mode through Wi-Fi</b>	1280x720, 1920x1080 pixels (Full HD)
<b>Live display mode through ethernet</b>	1280x720, 1920x1080 pixels (Full HD)
<b>Data transfer</b>	Wi-Fi (2.4 & 5 GHz), Ethernet
<b>Software</b>	Motic Images Plus 3.1 for Windows, OSX and Linux, MotiConnect App for iOS and Android



## MotiConnect App

View, edit, capture and store your images in the blink of an eye, view live images on multiple wireless devices and share your work with anyone in just a few clicks. The MotiConnect App makes data sharing possible in a collaborative environment, encouraging teamwork and collective learning experiences.



## Wi-Fi

With built-in Wi-Fi connectivity, you can instantly link the live image from your microscope to your tablet or smartphone and share it with up to six devices simultaneously. View, capture, and edit your microscope images effortlessly.



## RJ-45

Connect it to a network to run a DigiClass, for remote sharing or for working with your computer and Motic's well-known Motic Images Plus Software.



## USB

5 V for power supply of external devices