

High-Performance Entry-Level Camera

- **Powerful 3.1 megapixel CMOS sensor**
- **Excellent color fidelity**
- **High frame rates**
- **Complete integration into Olympus Imaging platforms for intuitive control***
- **Easy to install**
- **Convenient USB connection**

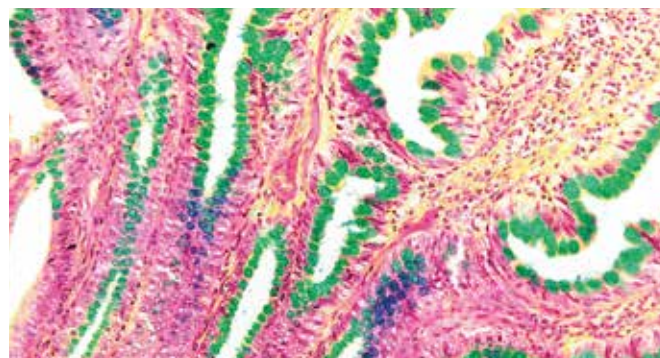


Excellent for Standard Applications and Digital Documentation Purposes

The Olympus LC30 color camera for microscopy combines versatility with performance. With up to 37 frames per second (fps), faithful color reproduction, full integration into Olympus imaging platforms, and an excellent cost-performance ratio, the LC30 is the ideal entry-level microscope camera for quality bright-field imaging — suitable for applications in life and material sciences. The sensitivity and frame rate of the 3.1-megapixel CMOS chip can be increased using various binning modes, resulting in easy observation and focusing. The LC30 camera can be quickly and easily mounted on all microscopes equipped with a standard C-mount adaptor, and requires only a single USB 2.0 cable for high-speed data transfer and power supply. Its complete integration into the cellSens and OLYMPUS Stream imaging platforms helps ensure the seamless interaction of microscope, camera, and additional devices, delivering intuitive and efficient operation.



Materials Science example image: cast iron



Life Sciences example image: intestine

Not for clinical diagnostic use.

* OLYMPUS Stream, cellSens

Powerful and Versatile

The Olympus LC30 camera is equipped with a powerful 3.1-megapixel CMOS chip for outstanding image quality. Under a broad variance of common illumination conditions the LC30 can adapt easily by flexible exposure times and various binning modes to create detailed and dynamic images.

High Frame Rates

Thanks to its high frame rates, the LC30 camera makes it easy to navigate the sample and to focus precisely on areas of interest. 3x binning mode delivers 37 images per second at 680 x 512 pixels, making observation of samples smooth and convenient. 2x binning mode enables the acquisition of 28 images per second at 1,024 x 768 pixels, helping ensure quick and accurate focusing. In full 3.1-megapixel resolution, the LC30 camera still delivers 10 images per second.

True Color Accuracy

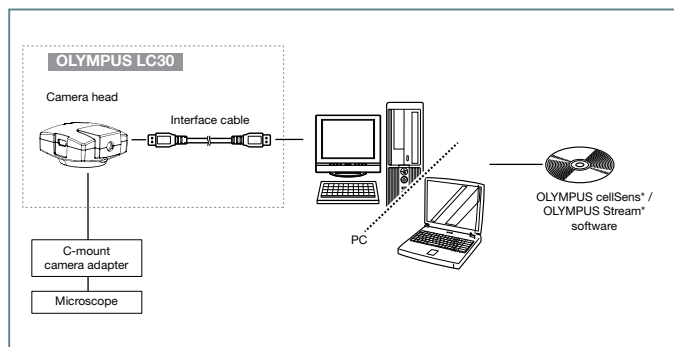
Color is one of the main criteria in differentiating the relevant aspects of a sample. Accurate color reproduction and recording are of utmost importance to all digital microscope imaging systems. Olympus' patented true color correction uses precisely-calibrated ICC profiles for the best possible color reproduction. This unique and advanced technique works in real time to help ensure excellent color fidelity at the highest speed possible and avoids the need for post image capture correction.

Easy to Install and Convenient to Use

The LC30 camera can be mounted quickly and easily on all light microscopes with a C-mount adaptor. USB 2.0 facilitates quick, flexible, and easy connection to the host PC or laptop. Only a single USB 2.0 cable is needed for high-speed data transfer and power supply. The LC30 camera can be fully operated via the OLYMPUS Stream and cellSens imaging platforms. This helps ensure that the camera is easy to use to its full potential and delivers proven solutions to a broad range of imaging needs, including image commenting, archiving, and report generation.



Olympus LC30 PC System Configuration Diagram



* OLYMPUS Stream and cellSens are not for clinical diagnostic use.

Specifications

Image Sensor	Color CMOS
Sensor Size	1/2 inch (6.55 × 4.92 mm)
Resolution (max.)	2,048 × 1,532 pixels
Pixel Size	3.2 × 3.2 μm
Binning	2x, 3x, 4x
A/D Converter (Bit Depth)	10-bit
Exposure Time	From 57 μs to 750 msec
Live Frame Rates	10 fps at 2,048 × 1,532 pixels (@ full resolution)
	28 fps at 1,024 × 768 pixels (@ binning 2x)
	37 fps at 680 × 512 pixels (@ binning 3x)
	49 fps at 508 × 384 pixels (@ binning 4x)
Cooling System	N/a
External Trigger	N/a
Data Transfer	USB 2.0
Color Profiles	Olympus real-time ICC color profiles
Partial Readout	Yes (in software)
Remarks	Convenient USB interface
	High frame rate at full resolution
	Easy installation
	Accurate color reproduction
Operating System	Windows 10 (32-bit or 64-bit)
	Windows 8/8.1 (32-bit or 64-bit)
	Windows 7 (32-bit or 64-bit)
Dimensions (H × W × D)	48.6 mm × 44 mm × 31 mm
Weight	Approx. 41 g
Mount	C-mount

- OLYMPUS CORPORATION is ISO9001/ISO14001 certified.
- All company and product names are registered trademarks and/or trademarks of their respective owners.
- Images on the PC monitors are simulated.
- Specifications and appearances are subject to change without any notice or obligation on the part of the manufacturer.

www.olympus-ims.com

OLYMPUS[®]

For enquiries - contact
www.olympus-ims.com/contact-us

OLYMPUS CORPORATION
Shinjuku Monolith, 2-3-1, Nishi-Shinjuku, Shinjuku-ku, Tokyo 163-0914, Japan
OLYMPUS EUROPA SE & CO. KG
Wendenstrasse 14-18, 20097 Hamburg, Germany
OLYMPUS SCIENTIFIC SOLUTIONS AMERICAS CORP.
48 Woerd Avenue, Waltham, MA 02453, U.S.A.
OLYMPUS (CHINA) CO., LTD.
10F, K. Wah Centre, 1010 Huai Hai Road (N), Xuhui District, Shanghai, 200031 P.R.C.

OLYMPUS KOREA CO., LTD.
8F Olympus Tower, 446 Bongseung-ro, Gangnam-gu, Seoul, 135-509 Korea
OLYMPUS AUSTRALIA PTY. LTD.
3 Acacia Place, Notting Hill VIC 3168, Australia
OLYMPUS SINGAPORE PTE LTD.
491B River Valley Road, #12-01/04 Valley Point Office Tower, Singapore 248373