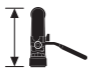


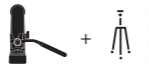
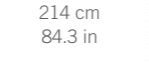


## DA

- 1 Stativplade – 1/4 tomme standardiseret gevind
- 2 Hurtigudløser
- 3 Klemmehjul – hurtigudløser
- 4 Indstillingshjul – rotationsmodstand vippeakse
- 5 Lodret skinne
- 6 Lodret slæde
- 7 Klemmearm – lodret slæde
- 8 Klemmearm – håndtag
- 9 Håndtag
- 10 Finjustering – drejemodstand
- 11 Bund
- 12 Klemmearm – drejebevægelse
- 13 3/8 tomme standardiseret tilslutningsgevind – stativtilslutning
- 14 Drejesikret

## RU

- 1 Пластина штатива – унифицированная соединительная резьба 1/4"
- 2 Кнопка быстрого защелкивания
- 3 Зажимное колесо – быстроразъемное соединение
- 4 Колесо настройки – сопротивление вращению по горизонтальной оси
- 5 Вертикальная шина
- 6 Вертикальная каретка
- 7 Зажимный рычаг – вертикальная каретка
- 8 Зажимный рычаг – ручка
- 9 Ручка
- 10 Точная настройка – сопротивление повороту
- 11 Основание
- 12 Зажимный рычаг – поворот
- 13 Унифицированная соединительная резьба 3/8" – соединение штатива
- 14 Предохранитель от проворачивания

			
<b>PTH</b>	24 cm 9.5 in	1.3 kg 45.9 oz	5 kg 176.4 oz
<b>PTH + CT 101</b>		194 cm 76.4 in	2.8 kg 98.8 oz
<b>PTH + CT Travel</b>	NOT RECOMMENDED		
<b>PTH + AT 101</b>		214 cm 84.3 in	3.2 kg 112.9 oz

## BR balance rail – The perfect match



- DE** Mehr Informationen auf [WWW.SWAROVSKIOPTIK.COM](http://WWW.SWAROVSKIOPTIK.COM).
- EN** For more information, go to [WWW.SWAROVSKIOPTIK.COM](http://WWW.SWAROVSKIOPTIK.COM).
- FR** Pour de plus amples détails, consultez le site [WWW.SWAROVSKIOPTIK.COM](http://WWW.SWAROVSKIOPTIK.COM).
- IT** Per maggiori informazioni, visitate il sito web [WWW.SWAROVSKIOPTIK.COM](http://WWW.SWAROVSKIOPTIK.COM).
- ES** Más información en [WWW.SWAROVSKIOPTIK.COM](http://WWW.SWAROVSKIOPTIK.COM).
- NL** Nadere inlichtingen vindt u op [WWW.SWAROVSKIOPTIK.COM](http://WWW.SWAROVSKIOPTIK.COM).
- SV** Mer information finns på [WWW.SWAROVSKIOPTIK.COM](http://WWW.SWAROVSKIOPTIK.COM).
- FI** Lisätieto löydät osoitteesta [WWW.SWAROVSKIOPTIK.COM](http://WWW.SWAROVSKIOPTIK.COM).
- DA** Flere oplysninger på [WWW.SWAROVSKIOPTIK.COM](http://WWW.SWAROVSKIOPTIK.COM).
- RU** Дополнительная информация – на сайте [WWW.SWAROVSKIOPTIK.COM](http://WWW.SWAROVSKIOPTIK.COM).

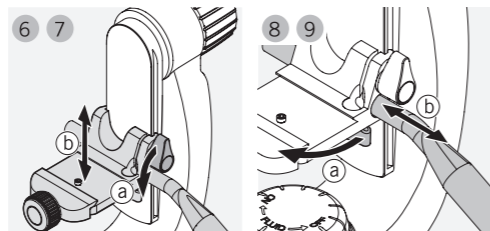
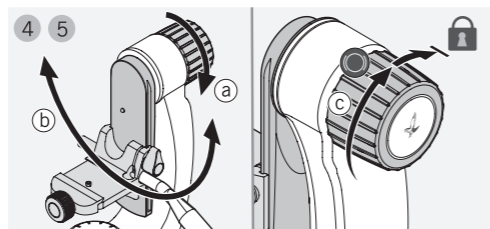
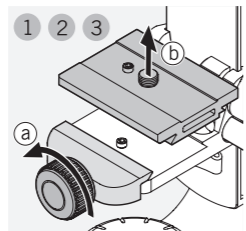
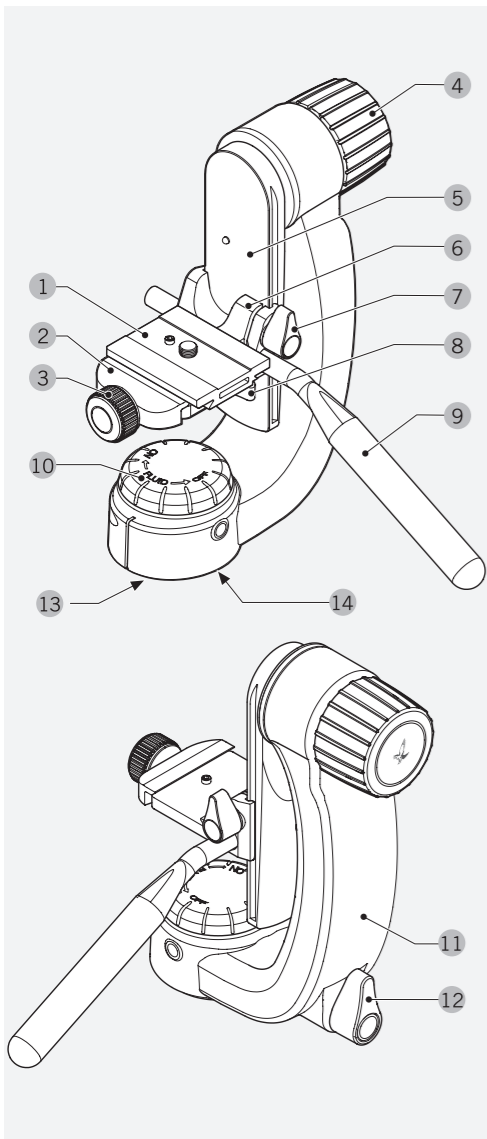
# PTH PROFESSIONAL TRIPOD HEAD

USER MANUAL

**SWAROVSKI OPTIK KG**  
6067 Absam, Austria  
Tel. 00800/32425056  
customerservice@swarovskioptik.com  
**WWW.SWAROVSKIOPTIK.COM**

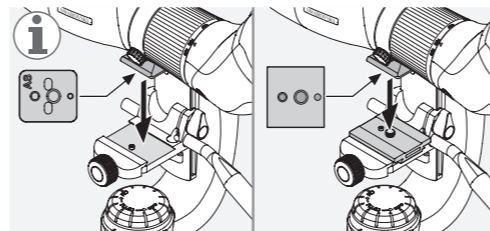
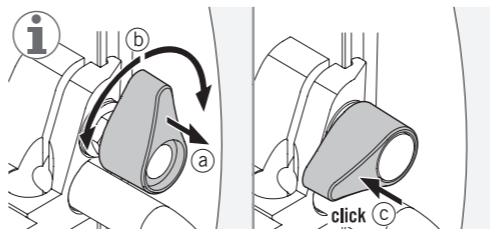
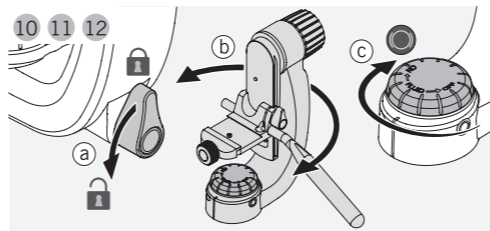
BA-702-23, 03/2017

  
**SWAROVSKI  
OPTIK**



#### DE

- 1 Stativplatte – 1/4" Anschlussgewinde genormt
- 2 Schnellverschluss
- 3 Klemmrad – Schnellverschluss
- 4 Einstellrad – Drehwiderstand Kippachse
- 5 Vertikalschiene
- 6 Vertikalschlitten
- 7 Klemmhebel – Vertikalschlitten
- 8 Klemmhebel – Handgriff
- 9 Handgriff
- 10 Feineinstellung – Schwenkwiderstand
- 11 Basis
- 12 Klemmhebel – Schwenkbewegung
- 13 3/8" Anschlussgewinde genormt – Stativanschluss
- 14 Verdrehsicherung



#### EN

- 1 Tripod plate – 1/4" thread standardized
- 2 Quick lock
- 3 Clamp wheel – quick lock
- 4 Dial – rotational resistance tilting axis
- 5 Vertical rail
- 6 Vertical slide
- 7 Clamping lever – vertical slide
- 8 Clamping lever – handle
- 9 Handle
- 10 Fine adjustment – swivel resistance
- 11 Base
- 12 Clamping lever – swivel movement
- 13 3/8" thread standardized – tripod connector
- 14 Rotary lock

#### FR

- 1 Plaque de trépied – filetage de raccordement 1/4" normalisé
- 2 Bouton de blocage rapide
- 3 Roue de verrouillage – bouton de blocage rapide
- 4 Roue de positionnement – résistance à la rotation de l'axe de basculement
- 5 Rail vertical
- 6 Stabilisateur vertical
- 7 Levier de verrouillage – stabilisateurs verticaux
- 8 Levier de verrouillage – poignée
- 9 Poignée
- 10 Réglage de précision – résistance au pivotement
- 11 Base
- 12 Levier de verrouillage – mouvement de pivotement
- 13 Filetage de raccordement 3/8" normalisé – raccordement du trépied
- 14 Dispositif anti-rotation

#### IT

- 1 Piastra del treppiede – filettatura 1/4" a norma
- 2 Sgancio rapido
- 3 Rotella di bloccaggio – sgancio rapido
- 4 Rotella di regolazione – resistenza di rotazione asse di inclinazione
- 5 Guida verticale
- 6 Slitta verticale
- 7 Leva di bloccaggio – slitta verticale
- 8 Leva di bloccaggio – impugnatura
- 9 Impugnatura
- 10 Regolazione precisa – resistenza basculante
- 11 Base
- 12 Leva di bloccaggio – movimento basculante
- 13 Filettatura 3/8" a norma – attacco del treppiede
- 14 Sicurezza torsione

#### ES

- 1 Placa de trípode – Rosca de conexión de 1/4" normalizada
- 2 Cierre rápido
- 3 Rueda de sujeción – Bloqueo rápido
- 4 Rueda de ajuste – Resistencia a la rotación del eje de inclinación
- 5 Carril vertical
- 6 Carro vertical
- 7 Palanca de sujeción – Carril vertical
- 8 Palanca de sujeción – Mango
- 9 Mango
- 10 Ajuste preciso – Resistencia al giro
- 11 Base
- 12 Palanca de sujeción – Movimiento giratorio
- 13 Rosca de conexión de 3/8" normalizada – Conexión del trípode
- 14 Protección contra torsión

#### NL

- 1 Statiefplaat – 1/4" schroefdraad gestandaardiseerd
- 2 Snelsluiting
- 3 Klemwiel – snelsluitend
- 4 Instelwielje – Kantelwielje met draaiweerstand
- 5 Verticale rail
- 6 Verticale stand
- 7 Klem – verticale stand
- 8 Klem – handvat
- 9 Handvat
- 10 Fijnafstelling – zwenkweerstand
- 11 Basis
- 12 Klem – draai beweging
- 13 3/8" schroefdraad gestandaardiseerd – statiefbevestiging
- 14 Draaivergrendeling

#### SV

- 1 Stativplatta – 1/4" standardiserad gänga
- 2 Snabbkoppling
- 3 Klämma med hjul – snabbkoppling
- 4 Inställningshjul – motstånd kullad
- 5 Vertikal skena
- 6 Vertikalt spår
- 7 Klämma – vertikalt spår
- 8 Klämma – handtag
- 9 Handtag
- 10 Finjustering – motstånd panorering
- 11 Bas
- 12 Klämma – panorering
- 13 3/8" standardiserad gänga – stativkoppling
- 14 Vridningskydd

#### FI

- 1 Kolmijalkalevy – 1/4"-kierre vakioitu
- 2 Pikasäätönappi
- 3 Kiristyspyörä – pikasäätönappi
- 4 Säädin – potentiometrin kiertovastus
- 5 Pystykisko
- 6 Pystysuora liukukappale
- 7 Kiinnitysvipu – pystysuora liukukappale
- 8 Kiinnitysvipu – kahva
- 9 Kahva
- 10 Hienosäätö – kiertovastus
- 11 Alusta
- 12 Kiinnitysvipu – kiertoliike
- 13 3/8"-kierre vakioitu – kolmijalan kiinnike
- 14 Kääntösuoja